



## Grange Farm Primary School

NEWSLETTER

November 27th  
2020

Dear Parents/Carers,

National restrictions end next week and we now know that Coventry will then enter Tier 3 restrictions instead. It is really important that everybody plays their part in keeping each other safe. The same basic messages (hands-face-space) continue to be the key ones in terms of what we can all do to help.

Have a lovely weekend,

Mr Ledgard

## Diary Dates

[Thursday 17th December](#)

FGF's Festive Party Day!

[Friday 18th December](#)

Last day of Autumn term

Teacher training days 2020/21:

Friday 13th November 2020

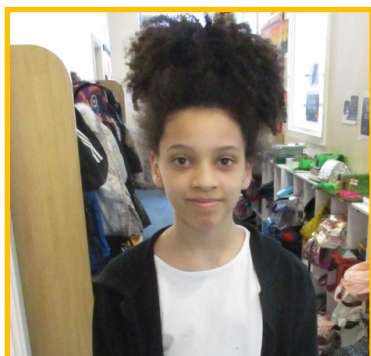
Monday 4th January 2021

Friday 12th March 2021

Monday 7th June 2021

For holiday dates, see the diary on the school website [using this link](#).

## Dojo Distinction



A big well done to Keela this week—fantastic effort in earning her latest Class Dojo Distinction certificate!

## Class Dojo Stars



Well done Nikhil, Iyzah, Rex, Harvey, Arjun and Devan!



And also well done Emem, Emma, Narayan, Senna, Maya, Jennifer and Jia!



And not forgetting Maya, Dhiaan, Katie, Oliver and Charlie!

All have received their next Class Dojo awards this week!

*Fitbit*

We are on the hunt for a lost Fitbit (blue with a cat on it). Please let the school office know if you have found it.



You can always see the most up to date information regarding the measures we have in place by viewing our Covid-19 Parent Handbook which is available on the website ([click here](#)).

Remember that you can always get reliable information from the NHS website ([here](#)) and the government's own webpages about the Coronavirus ([here](#)).

## EU Settlement Scheme

The official point of Brexit is now fast approaching and independent advice is available to help EU and EEA citizens who live in Coventry to protect their rights going forward. [Click here](#) to see a poster and flier which may be of use.

## Allergy Awareness

Another reminder this week that we have lots of children across school with nut allergies and we ask all parents & carers to avoid sending in anything with nuts.





## Festive Plans



A reminder from FGF that card orders (children's designs) have to be in by Monday 30th November—please note that this is an absolute deadline!

This year we are asking that children only send Christmas cards to people in their own year group. We can organise this within our Covid-19 measures (with appropriate quarantine periods etc) but unfortunately can't expand this any further.

If you would like a first name list of your child's class, please ask the school office (we ask permission for this in our GDPR requests at the start of each year).



Also on a festive theme, keep an eye on Twitter from next Tuesday onwards for the Grange Farm Advent calendar...

## Victorian Inspiration

Year 5's current topic is based all the way back in Victorian times—it has inspired plenty of fun and plenty of great learning at home as well at school!



## X-Tables Stars

Our children are doing so well with their tables tests that I'm running out of badges again...



Ranvir, Nihaal, Toby, Raajan, Freya, Baaj, Shyan...



Hannah, Freya, Isabel, Zephyr, Arthur, Manveer, Beau, Aysha, Meghan, Isla, Devan...



Baaj (again), Erin, Raajan (again), Aariyan, Ranvir (again), Sukhmani, Nihaal (again), Toby (again), Ridhima, Jo, Charlie, Jovan. Wow everyone—fantastic!

There's more on Twitter  
Have a look @gfprimary



Quote of the Week

LET YOUR SMILE  
CHANGE THE  
WORLD  
BUT DON'T LET THE  
WORLD CHANGE  
YOUR SMILE

## Food Support

If anyone finds their circumstances have changed, you can apply for Free School Meals at any point. All the information can be found on our website by following [this link](#).

Food banks are also continuing to operate in Coventry during this time. If you need help, please let us know and we can help get access to this support for families.

## PE Organisation

Just a reminder on PE days:

RP/RW—Wednesday

1L—Tuesday; Wednesday

1B—Tuesday; Thursday

2C—Tuesday; Thursday

2L—Wednesday; Thursday

3K—Monday; Wednesday

3S—Monday; Thursday

4D—Wednesday; Friday

4M—Wednesday; Thursday

5H—Tuesday; Wednesday

5MS—Tuesday; Wednesday

6D—Tuesday; Thursday; Friday

6C—Tuesday; Friday

PE days will stay the same over the weeks up to Christmas but sometimes plans in school will change depending on weather (and also Year 1 and Reception needing space to practise their Christmas performances). We will keep up with as much PE as we possibly can!